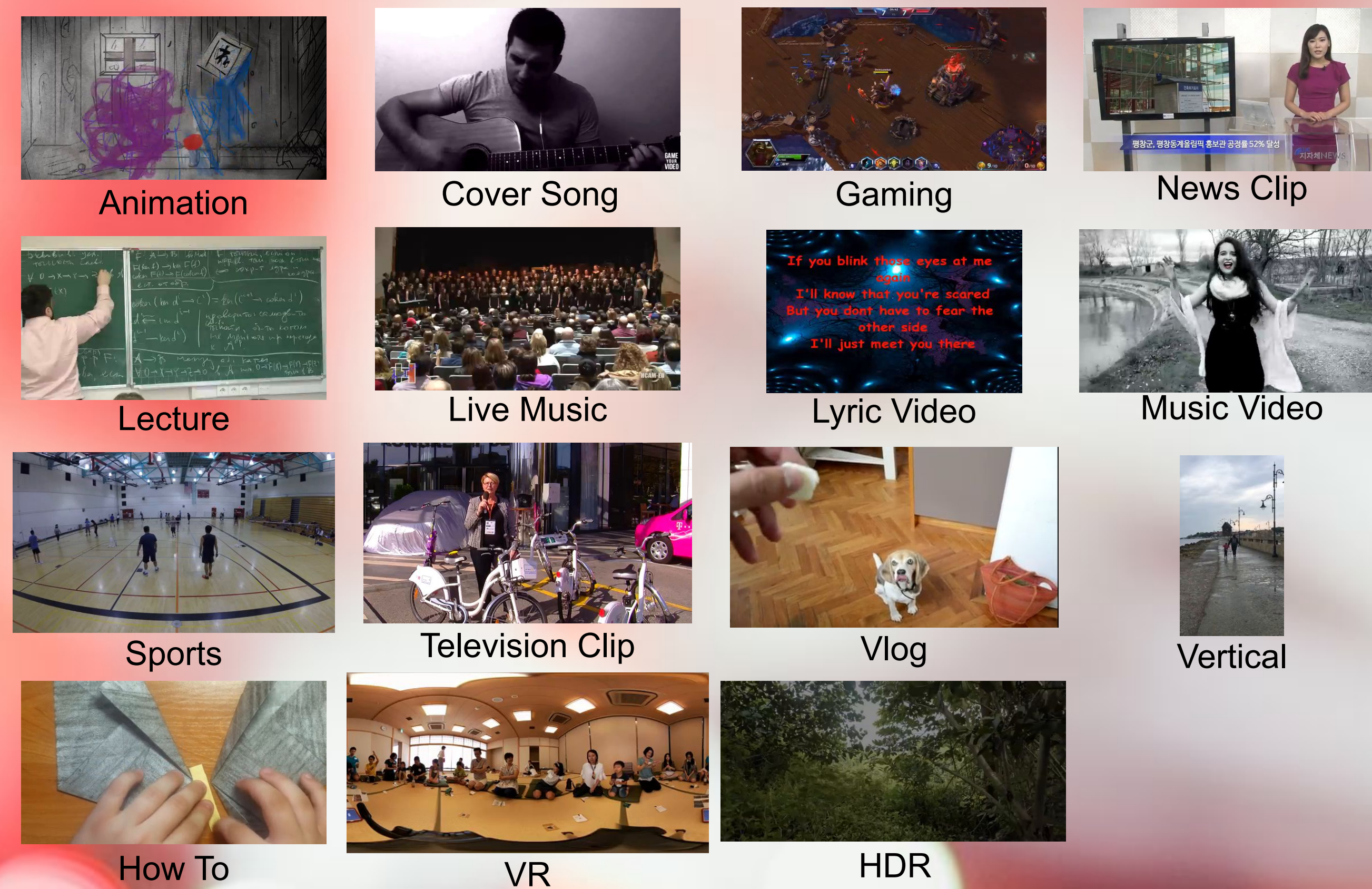


Youtube UGC Dataset

Yilin Wang, Sasi Inguva, Balu Adsumilli
Google Inc

- <https://media.withyoutube.com/>
- 1500 20s. raw Creative Commons videos
- 15 categories
- Resolutions 360 to 4k



Challenges with User Generated Content (UGC)

Non-pristine uploaded version



Initial Raw Video
 • pristine
 • huge Size

Uploaded Version
 • non-pristine (e.g. blurred)
 • small size

Misleading reference metrics



Original

Transcoded

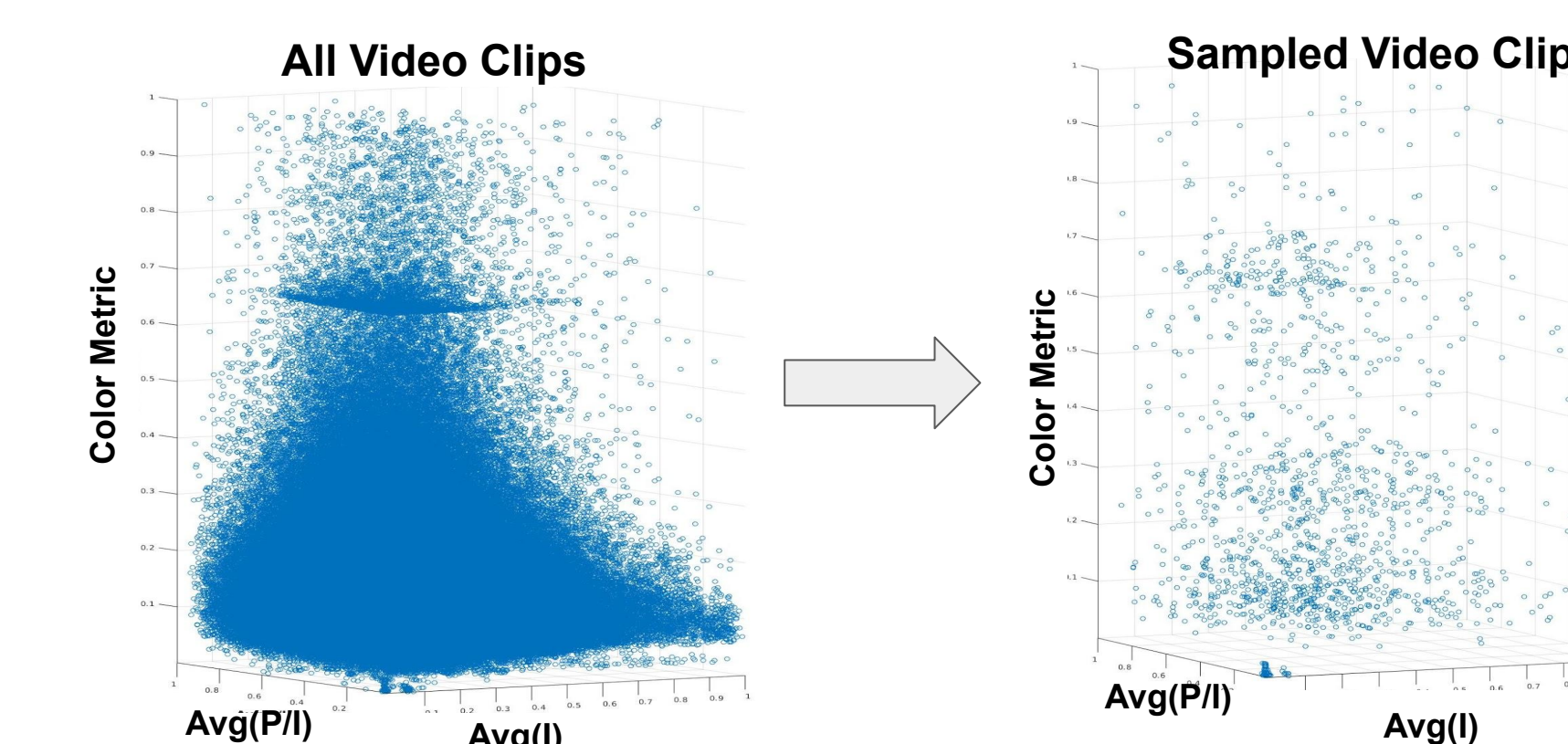
PSNR = 29.02, SSIM = 0.86, VMAF = 58.15

Banding = 0.10, Noise = 0.12, SLEEQ = 0.21 Banding = 0.10, Noise = 0.12, SLEEQ = 0.18

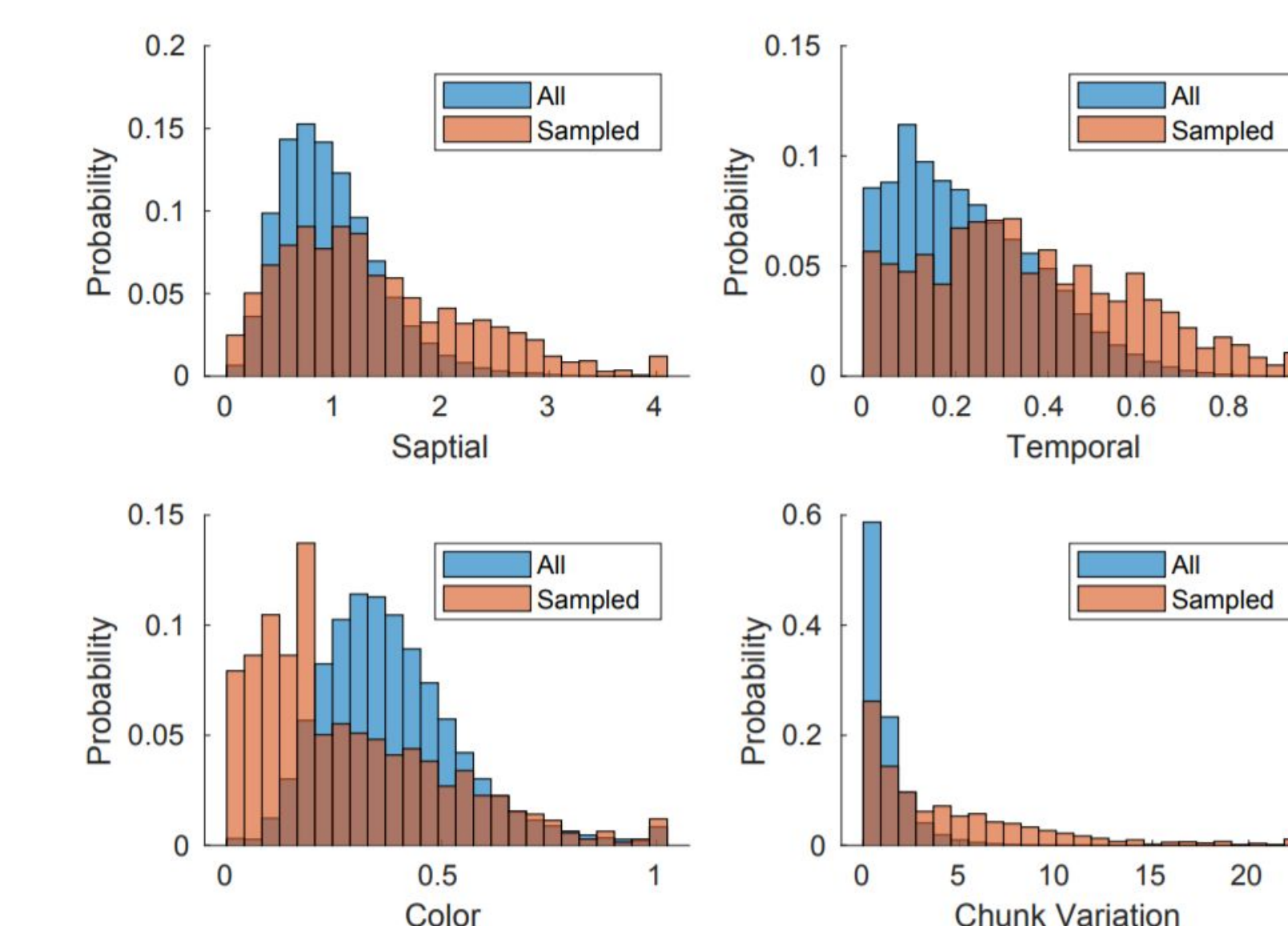
Dataset Selection



Coverage



84% of the input samples covered



No-reference Metrics

