

A Bayesian framework for the multifractal analysis of images using data augmentation and a Whittle approximation

S. COMBEXELLE^{1,*}, H. WENDT¹, Y. ALTMANN², J.-Y. TOURNERET¹, S. MCCLAUGHLIN², P. ABRY³

¹ IRIT - ENSEEIHT, Toulouse, France

² Heriot-Watt University, Edinburgh, Scotland

³ Ecole Normale Supérieure, Lyon, France

* Supported by the Direction Générale de l'Armement (DGA)

ICASSP 2016, Shanghai



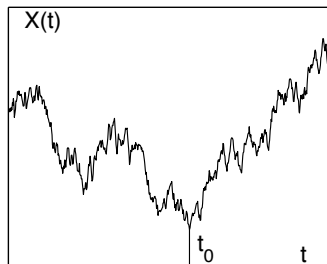
Introduction

- Multifractal analysis (MFA)
 - a widely used tool in signal/image processing
 - applications in various fields (texture analysis, . . .)
 - challenging estimation for images of small sizes
- Recent work
 - statistical estimation procedure based on a Bayesian framework
 - excellent estimation performance
 - high computational cost/ designed only for univariate data
- Contribution
 - more efficient estimation algorithm
 - suitable for extension to the analysis of collections of data

Characterization by local regularity

- Local regularity of $X(t)$ at t_0

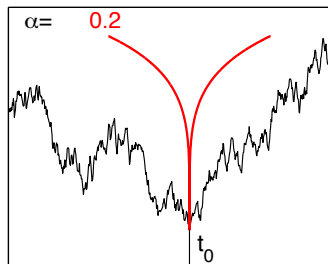
$$X \in C^\alpha(t_0) \quad \text{if} \quad \exists K, \alpha > 0; P_{t_0}(t); \deg(P_{t_0}) < \alpha : \\ |X(t) - P_{t_0}(t)| < K|t - t_0|^\alpha$$



Characterization by local regularity

- Local regularity of $X(t)$ at t_0

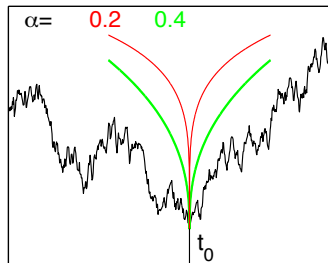
$$X \in C^\alpha(t_0) \quad \text{if} \quad \exists K, \alpha > 0; P_{t_0}(t); \deg(P_{t_0}) < \alpha : \\ |X(t) - P_{t_0}(t)| < K|t - t_0|^\alpha$$



Characterization by local regularity

- Local regularity of $X(t)$ at t_0

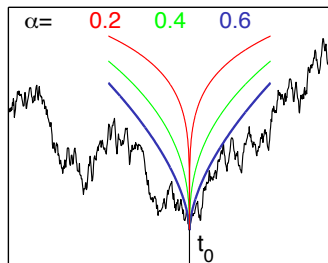
$$X \in C^\alpha(t_0) \quad \text{if} \quad \exists K, \alpha > 0; P_{t_0}(t); \deg(P_{t_0}) < \alpha : \\ |X(t) - P_{t_0}(t)| < K|t - t_0|^\alpha$$



Characterization by local regularity

- Local regularity of $X(t)$ at t_0

$$X \in C^\alpha(t_0) \quad \text{if} \quad \exists K, \alpha > 0; P_{t_0}(t); \deg(P_{t_0}) < \alpha : \\ |X(t) - P_{t_0}(t)| < K|t - t_0|^\alpha$$



Characterization by local regularity

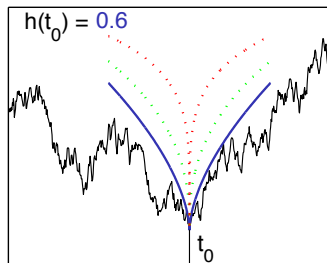
- Local regularity of $X(t)$ at t_0

$$X \in C^\alpha(t_0) \quad \text{if} \quad \exists K, \alpha > 0; P_{t_0}(t); \deg(P_{t_0}) < \alpha :$$

$$|X(t) - P_{t_0}(t)| < K|t - t_0|^\alpha$$

- Hölder exponent:

$$h(t_0) = \sup_{\alpha} \{\alpha : X \in C^\alpha(t_0)\}$$



Characterization by local regularity

- Local regularity of $X(t)$ at t_0

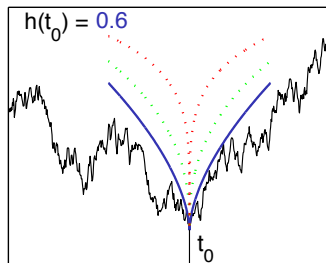
$$X \in C^\alpha(t_0) \quad \text{if} \quad \exists K, \alpha > 0; P_{t_0}(t); \deg(P_{t_0}) < \alpha : \\ |X(t) - P_{t_0}(t)| < K|t - t_0|^\alpha$$

- Hölder exponent:

$$h(t_0) = \sup_{\alpha} \{ \alpha : X \in C^\alpha(t_0) \}$$

$h(t_0) \rightarrow 1 \Rightarrow$ smooth, very regular

$h(t_0) \rightarrow 0 \Rightarrow$ rough, very irregular

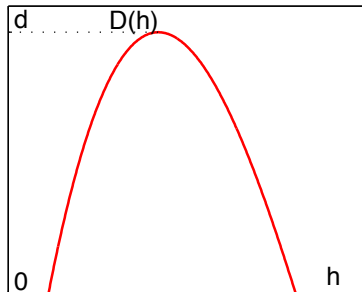
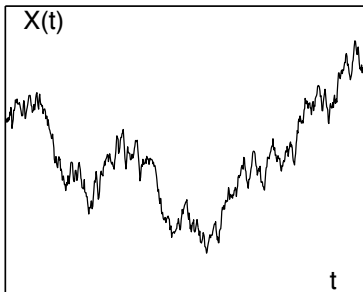


Multifractal spectrum

- **Multifractal spectrum** $D(h)$:

- geometric description of fluctuations of the local regularity
- Hausdorff dimension of the sets $\{t_i | h(t_i) = h\}$

$$D(h) = \dim_H \{t : h(t) = h\}$$

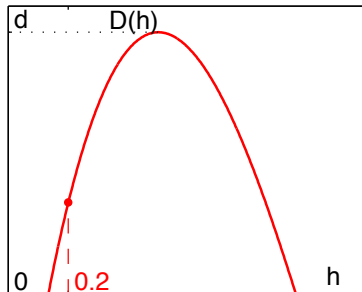
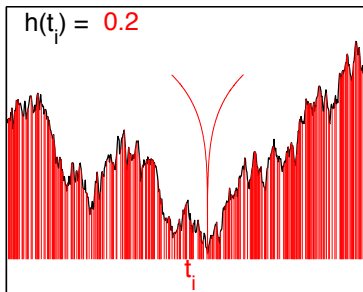


Multifractal spectrum

- **Multifractal spectrum** $D(h)$:

- geometric description of fluctuations of the local regularity
- Hausdorff dimension of the sets $\{t_i | h(t_i) = h\}$

$$D(h) = \dim_H \{t : h(t) = h\}$$

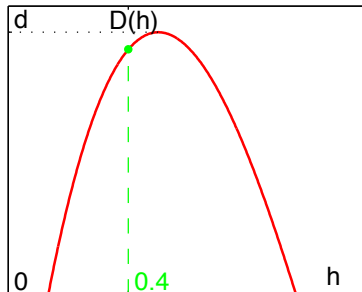
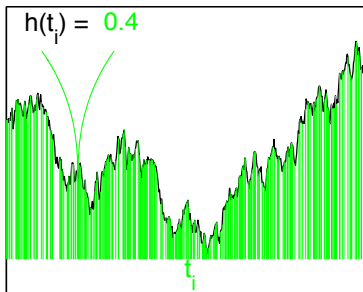


Multifractal spectrum

- **Multifractal spectrum** $D(h)$:

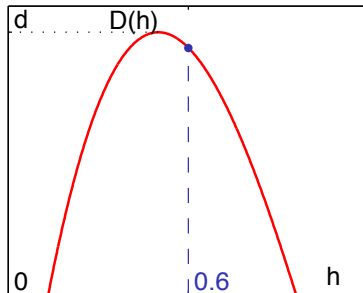
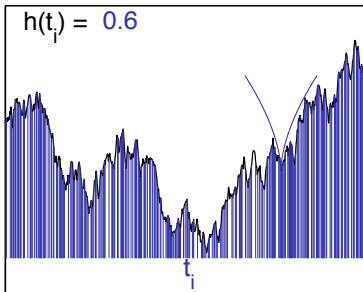
- geometric description of fluctuations of the local regularity
- Hausdorff dimension of the sets $\{t_i | h(t_i) = h\}$

$$D(h) = \dim_H \{t : h(t) = h\}$$



Multifractal spectrum

- **Multifractal spectrum** $D(h)$:
 - geometric description of fluctuations of the local regularity
 - Hausdorff dimension of the sets $\{t_i | h(t_i) = h\}$
$$D(h) = \dim_H \{t : h(t) = h\}$$

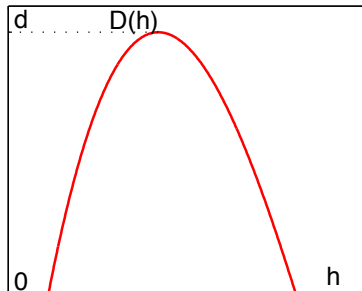
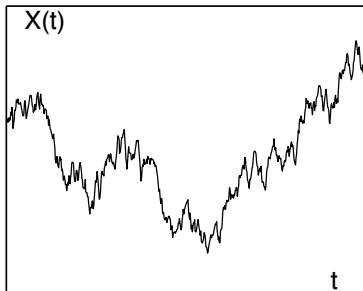


Multifractal spectrum

- **Multifractal spectrum** $D(h)$:
 - geometric description of fluctuations of the local regularity
 - Hausdorff dimension of the sets $\{t_i | h(t_i) = h\}$
$$D(h) = \dim_H \{t : h(t) = h\}$$

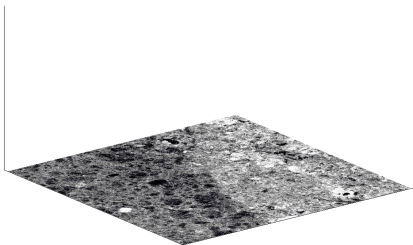
- In practice → **multifractal formalism**

[Parisi85]



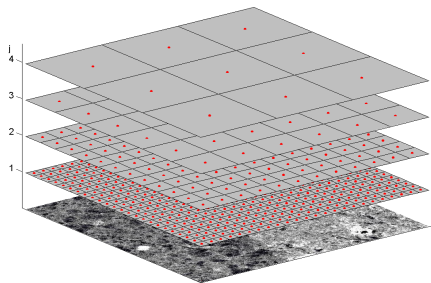
Multifractal formalism

- Dyadic wavelet transform: image **X**



Multifractal formalism

- Dyadic wavelet transform: image $\mathbf{X} \rightarrow \{d^{(m)}(j, \cdot, \cdot)\}_{m=1,2,3}$



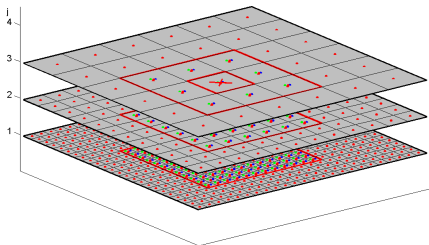
Multifractal formalism

- Dyadic wavelet transform: image $\mathbf{X} \rightarrow \{d^{(m)}(j, \cdot, \cdot)\}_{m=1,2,3}$

- Wavelet leaders $\{\ell(j, \cdot, \cdot)\}$

[Jaffard04]

$$\ell(j, k_1, k_2) = \sup_{m, \lambda' \in 3\lambda_{j, k_1, k_2}} |d^{(m)}(\lambda')|$$



Multifractal formalism

- Dyadic wavelet transform: image $\mathbf{X} \rightarrow \{d^{(m)}(j, \cdot, \cdot)\}_{m=1,2,3}$

- **Wavelet leaders** $\{\ell(j, \cdot, \cdot)\}$

[Jaffard04]

$$\ell(j, k_1, k_2) = \sup_{m, \lambda' \subset 3\lambda_{j, k_1, k_2}} |d^{(m)}(\lambda')|$$

- Polynomial expansion

[Castaing93]

$$D(h) \approx 2 + \frac{c_2}{2!} \left(\frac{h - c_1}{c_2} \right)^2 - \frac{c_3}{3!} \left(\frac{h - c_1}{c_2} \right)^3 + \dots$$

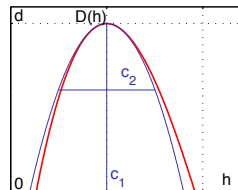
→ c_p tied to multiscale statistics of **log-leaders** $\{\ln \ell(j, \cdot, \cdot)\}$

- **Multifractality parameter c_2**

- tied to the variance of $\{\ln \ell(j, \cdot, \cdot)\}$

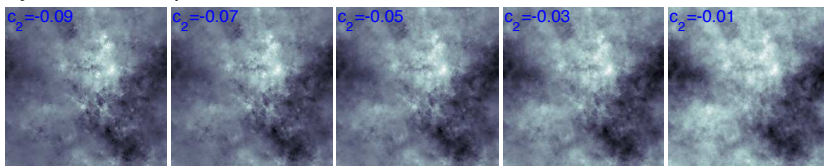
$$\text{Var} [\ln \ell(j, \cdot, \cdot)] = c_2^0 + c_2 \ln 2^j$$

- width of the multifractal spectrum $D(h)$
- self-similar processes \leftrightarrow **multiplicative cascades**



Estimation of the multifractality parameter

● Synthetic multiplicative cascades with different c_2



● Estimation of c_2

- benchmark: linear regression-based estimation

[Castaing93]

$$\text{Var} [\ln \ell(j, \cdot, \cdot)] = c_2^0 + c_2 \ln 2^j$$

✗ estimation performance

- recently proposed Bayesian estimation

[Combexelle15]

✓ estimation performance

✗ computational cost: Metropolis-Hasting (MH) moves

Space-domain statistical model of log-leaders

1. Marginal distribution of **log-leaders** approximated by **Gaussian**

$$l(j, \cdot, \cdot) = \ln L(j, \cdot, \cdot) \sim \mathcal{N}(\cdot, c_2^0 + c_2 \ln 2^j)$$

2. Intra-scale dependence captured by a **radial covariance model**

$$\text{Cov}[l(j, \mathbf{k}), l(j, \mathbf{k} + \Delta \mathbf{k})] \stackrel{\Delta r = |\Delta \mathbf{k}|}{\approx} \varrho_j(\Delta r; \boldsymbol{\theta}), \quad \boldsymbol{\theta} = (c_2, c_2^0)$$

- Likelihood of **centered** log-leaders l_j stacked in $\mathbf{l} = [l_{j_1}^T, \dots, l_{j_2}^T]^T$

→ **scale-wise product** of Gaussian likelihoods

$$p(\mathbf{l}|\boldsymbol{\theta}) \propto \prod_{j=j_1}^{j_2} |\boldsymbol{\Sigma}_{j,\boldsymbol{\theta}}|^{-\frac{1}{2}} \exp\left(-\frac{1}{2} \mathbf{l}_j^T \boldsymbol{\Sigma}_{j,\boldsymbol{\theta}}^{-1} \mathbf{l}_j\right), \text{ with } \boldsymbol{\Sigma}_{j,\boldsymbol{\theta}} \text{ induced by } \varrho_j(\Delta r; \boldsymbol{\theta})$$

X *evaluation of $p(\mathbf{l}|\boldsymbol{\theta})$ numerically unstable*

[Combrexelle15]

Whittle approximation

- Evaluation of the Gaussian likelihood in the **spectral domain**

$$p_W(l|\theta) \propto \prod_{j=j_1}^{j_2} |\Gamma_{j,\theta}|^{-1} \exp\left(-\mathbf{y}_j^H \Gamma_{j,\theta}^{-1} \mathbf{y}_j\right)$$

- \mathbf{y}_j **Fourier coefficients** of l_j
- $\Gamma_{j,\theta}$ **parametric spectral density** associated with $\varrho_j(\Delta r; \theta)$
→ closed-form expression via Hankel transform

$$\Gamma_{j,\theta} = c_2 \mathbf{F}_{1,j} + c_2^0 \mathbf{F}_{2,j} \quad \text{with} \quad \mathbf{F}_{i,j} = \text{diag}(\mathbf{f}_{i,j})$$

[Combrexelle15]

Whittle approximation

- Evaluation of the Gaussian likelihood in the **spectral domain**

$$p_W(l|\theta) \propto \prod_{j=j_1}^{j_2} |\Gamma_{j,\theta}|^{-1} \exp\left(-\mathbf{y}_j^H \Gamma_{j,\theta}^{-1} \mathbf{y}_j\right)$$

- \mathbf{y}_j **Fourier coefficients** of l_j
- $\Gamma_{j,\theta}$ **parametric spectral density** associated with $\varrho_j(\Delta r; \theta)$
→ closed-form expression via Hankel transform

$$\Gamma_{j,\theta} = c_2 \mathbf{F}_{1,j} + c_2^0 \mathbf{F}_{2,j} \quad \text{with} \quad \mathbf{F}_{i,j} = \text{diag}(\mathbf{f}_{i,j})$$

- Bayesian estimation of $\theta = (c_2, c_2^0)$
 - space-domain likelihood (approximated) + common priors
- X** *non-standard posterior distribution → acceptance/reject moves*

[Combrexelle15]

C1 - Fourier-domain statistical model

- Whittle approximation

$$p_W(l|\theta) \propto \prod_{j=j_1}^{j_2} |\Gamma_{j,\theta}|^{-1} \exp\left(-\mathbf{y}_j^H \Gamma_{j,\theta}^{-1} \mathbf{y}_j\right)$$

- \mathbf{y}_j Fourier coefficients of l_j
- $\Gamma_{j,\theta} = c_2 \mathbf{F}_{1,j} + c_2^0 \mathbf{F}_{2,j}$ parametric spectral density



- Generative model for $\mathbf{y} = [\mathbf{y}_{j_1}^T, \dots, \mathbf{y}_{j_2}^T]^T$

$$p(\mathbf{y}|\theta) \propto |\Gamma_\theta|^{-1} \exp\left(-\mathbf{y}^H \Gamma_\theta^{-1} \mathbf{y}\right)$$

- complex Gaussian model $\mathbf{y} \sim \mathcal{CN}(\mathbf{0}, \Gamma_\theta)$
- $\Gamma_\theta = c_2 \mathbf{F}_1 + c_2^0 \mathbf{F}_2$ and $\mathbf{F}_i = \text{diag}(\mathbf{F}_{i,j_1}, \dots, \mathbf{F}_{i,j_2})$

X model not separable in (c_2, c_2^0)

C1 - Fourier-domain statistical model

- Whittle approximation

$$p_W(l|\theta) \propto \prod_{j=j_1}^{j_2} |\Gamma_{j,\theta}|^{-1} \exp\left(-\mathbf{y}_j^H \Gamma_{j,\theta}^{-1} \mathbf{y}_j\right)$$

- \mathbf{y}_j Fourier coefficients of l_j
- $\Gamma_{j,\theta} = c_2 \mathbf{F}_{1,j} + c_2^0 \mathbf{F}_{2,j}$ parametric spectral density



- Generative model for $\mathbf{y} = [\mathbf{y}_{j_1}^T, \dots, \mathbf{y}_{j_2}^T]^T$

$$p(\mathbf{y}|\theta) \propto |\Gamma_\theta|^{-1} \exp\left(-\mathbf{y}^H \Gamma_\theta^{-1} \mathbf{y}\right)$$

- complex Gaussian model $\mathbf{y} \sim \mathcal{CN}(\mathbf{0}, \Gamma_\theta)$
- $\Gamma_\theta = c_2 \mathbf{F}_1 + c_2^0 \mathbf{F}_2$ and $\mathbf{F}_i = \text{diag}(\mathbf{F}_{i,j_1}, \dots, \mathbf{F}_{i,j_2})$

X model not separable in (c_2, c_2^0)

C2 - Reparametrization

- **Non-separable constraints** on (c_2, c_2^0)

$$\theta \in \mathcal{A} = \{(c_2, c_2^0) \in \mathbb{R}_*^- \times \mathbb{R}_*^+ \mid \Gamma_\theta = c_2 \mathbf{F}_1 + c_2^0 \mathbf{F}_2 \text{ positive-definite}\}$$

- Design of a linear **diffeomorphism** ψ

- 1 maps **joint constraints** into **independent positivity constraints**

$$\begin{aligned} \psi: \mathcal{A} &\rightarrow \mathbb{R}_*^{+2} \\ &: \theta \mapsto \psi(\theta) \triangleq \tilde{\theta} \end{aligned}$$

- 2 leads to a **more convenient likelihood**

$$p(\mathbf{y} \mid \tilde{\theta}) \propto |\Gamma_{\tilde{\theta}}|^{-1} \exp\left(-\mathbf{y}^H \Gamma_{\tilde{\theta}}^{-1} \mathbf{y}\right) \quad \text{with}$$

$$\text{for } \tilde{\theta} \in \mathbb{R}_*^{+2} \begin{cases} \Gamma_{\tilde{\theta}} = \tilde{\theta}_1 \tilde{\mathbf{F}}_1 + \tilde{\theta}_2 \tilde{\mathbf{F}}_2 & \text{positive-definite} \\ \tilde{\theta}_1 \tilde{\mathbf{F}}_1 \text{ and } \tilde{\theta}_2 \tilde{\mathbf{F}}_2 & \text{positive-definite} \end{cases}$$

→ **likelihood separable via data augmentation**

C2 - Reparametrization

- **Non-separable constraints** on (c_2, c_2^0)

$$\theta \in \mathcal{A} = \{(c_2, c_2^0) \in \mathbb{R}_*^- \times \mathbb{R}_*^+ \mid \Gamma_\theta = c_2 \mathbf{F}_1 + c_2^0 \mathbf{F}_2 \text{ positive-definite}\}$$

- Design of a linear **diffeomorphism** ψ

- 1 maps **joint constraints** into **independent positivity constraints**

$$\begin{aligned} \psi: \mathcal{A} &\rightarrow \mathbb{R}_*^{+2} \\ &: \theta \mapsto \psi(\theta) \triangleq \tilde{\theta} \end{aligned}$$

- 2 leads to a **more convenient likelihood**

$$p(\mathbf{y} \mid \tilde{\theta}) \propto |\Gamma_{\tilde{\theta}}|^{-1} \exp\left(-\mathbf{y}^H \Gamma_{\tilde{\theta}}^{-1} \mathbf{y}\right) \quad \text{with}$$

$$\text{for } \tilde{\theta} \in \mathbb{R}_*^{+2} \begin{cases} \Gamma_{\tilde{\theta}} = \tilde{\theta}_1 \tilde{\mathbf{F}}_1 + \tilde{\theta}_2 \tilde{\mathbf{F}}_2 & \text{positive-definite} \\ \tilde{\theta}_1 \tilde{\mathbf{F}}_1 \text{ and } \tilde{\theta}_2 \tilde{\mathbf{F}}_2 & \text{positive-definite} \end{cases}$$

→ *likelihood separable via data augmentation*

C2 - Reparametrization

- **Non-separable constraints** on (c_2, c_2^0)

$$\theta \in \mathcal{A} = \{(c_2, c_2^0) \in \mathbb{R}_*^- \times \mathbb{R}_*^+ \mid \Gamma_\theta = c_2 \mathbf{F}_1 + c_2^0 \mathbf{F}_2 \text{ positive-definite}\}$$

- Design of a linear **diffeomorphism** ψ

- 1 maps **joint constraints** into **independent positivity constraints**

$$\begin{aligned} \psi: \mathcal{A} &\rightarrow \mathbb{R}_*^{+2} \\ &: \theta \mapsto \psi(\theta) \triangleq \tilde{\theta} \end{aligned}$$

- 2 leads to a **more convenient likelihood**

$$p(\mathbf{y} \mid \tilde{\theta}) \propto |\Gamma_{\tilde{\theta}}|^{-1} \exp\left(-\mathbf{y}^H \Gamma_{\tilde{\theta}}^{-1} \mathbf{y}\right) \quad \text{with}$$

$$\text{for } \tilde{\theta} \in \mathbb{R}_*^{+2} \left\{ \begin{array}{l} \Gamma_{\tilde{\theta}} = \tilde{\theta}_1 \tilde{\mathbf{F}}_1 + \tilde{\theta}_2 \tilde{\mathbf{F}}_2 \quad \text{positive-definite} \\ \tilde{\theta}_1 \tilde{\mathbf{F}}_1 \text{ and } \tilde{\theta}_2 \tilde{\mathbf{F}}_2 \quad \text{positive-definite} \end{array} \right.$$

→ *likelihood separable via data augmentation*

C3 - Data augmentation

- Definition of an **augmented model**

$$\begin{cases} \mathbf{y}|\mu, \tilde{\theta}_2 \sim \mathcal{CN}(\mu, \tilde{\theta}_2 \tilde{\mathbf{F}}_2) & \text{observed data} \\ \mu|\tilde{\theta}_1 \sim \mathcal{CN}(\mathbf{0}, \tilde{\theta}_1 \tilde{\mathbf{F}}_1) & \text{hidden mean} \end{cases}$$

with **augmented likelihood**

$$p(\mathbf{y}, \mu|\tilde{\theta}) \propto \tilde{\theta}_2^{-N_y} \exp\left(-\frac{1}{\tilde{\theta}_2}(\mathbf{y}-\mu)^H \tilde{\mathbf{F}}_2^{-1}(\mathbf{y}-\mu)\right) \times \tilde{\theta}_1^{-N_y} \exp\left(-\frac{1}{\tilde{\theta}_1} \mu^H \tilde{\mathbf{F}}_1^{-1} \mu\right)$$

- Virtues of the augmented likelihood

✓ recovers the original likelihood by marginalization

$$p(\mathbf{y}|\tilde{\theta}) = \int p(\mathbf{y}, \mu|\tilde{\theta}) d\mu$$

✓ *separable in $(\tilde{\theta}_1, \tilde{\theta}_2)$*

✓ *conjugate to inverse-gamma priors*

C3 - Data augmentation

- Definition of an **augmented model**

$$\begin{cases} \mathbf{y}|\mu, \tilde{\theta}_2 \sim \mathcal{CN}(\mu, \tilde{\theta}_2 \tilde{\mathbf{F}}_2) & \text{observed data} \\ \mu|\tilde{\theta}_1 \sim \mathcal{CN}(\mathbf{0}, \tilde{\theta}_1 \tilde{\mathbf{F}}_1) & \text{hidden mean} \end{cases}$$

with **augmented likelihood**

$$p(\mathbf{y}, \mu|\tilde{\theta}) \propto \tilde{\theta}_2^{-N_y} \exp\left(-\frac{1}{\tilde{\theta}_2}(\mathbf{y}-\mu)^H \tilde{\mathbf{F}}_2^{-1}(\mathbf{y}-\mu)\right) \times \tilde{\theta}_1^{-N_y} \exp\left(-\frac{1}{\tilde{\theta}_1} \mu^H \tilde{\mathbf{F}}_1^{-1} \mu\right)$$

- Virtues of the augmented likelihood

✓ recovers the original likelihood by marginalization

$$p(\mathbf{y}|\tilde{\theta}) = \int p(\mathbf{y}, \mu|\tilde{\theta}) d\mu$$

✓ *separable in $(\tilde{\theta}_1, \tilde{\theta}_2)$*

✓ *conjugate to inverse-gamma priors*

Bayesian model

● Bayesian model

- augmented likelihood $p(\mathbf{y}, \boldsymbol{\mu} | \tilde{\boldsymbol{\theta}})$
- independent inverse-gamma priors

$$\pi(\tilde{\theta}_i) \sim \mathcal{IG}(\alpha, \beta), \quad \alpha, \beta \ll 1$$

- Bayes' theorem

$$p(\tilde{\boldsymbol{\theta}}, \boldsymbol{\mu} | \mathbf{y}) \propto p(\mathbf{y}, \boldsymbol{\mu} | \tilde{\boldsymbol{\theta}}) \times \prod_i \pi(\tilde{\theta}_i)$$

● Bayesian estimator

- minimum mean squared error

$$\tilde{\boldsymbol{\theta}}^{\text{MMSE}} = \mathbb{E}[\tilde{\boldsymbol{\theta}} | \mathbf{y}]$$

- untractable integration over the posterior

→ computation via a Markov chain Monte Carlo algorithm

Bayesian model

- Bayesian model

- augmented likelihood $p(\mathbf{y}, \boldsymbol{\mu} | \tilde{\boldsymbol{\theta}})$
- independent inverse-gamma priors

$$\pi(\tilde{\theta}_i) \sim \mathcal{IG}(\alpha, \beta), \quad \alpha, \beta \ll 1$$

- Bayes' theorem

$$p(\tilde{\boldsymbol{\theta}}, \boldsymbol{\mu} | \mathbf{y}) \propto p(\mathbf{y}, \boldsymbol{\mu} | \tilde{\boldsymbol{\theta}}) \times \prod_i \pi(\tilde{\theta}_i)$$

- Bayesian estimator

- minimum mean squared error

$$\tilde{\boldsymbol{\theta}}^{\text{MMSE}} = \mathbb{E}[\tilde{\boldsymbol{\theta}} | \mathbf{y}]$$

- untractable integration over the posterior
→ computation via a **Markov chain Monte Carlo algorithm**

Markov chain Monte Carlo algorithm

- Generation of a collection of samples $(\tilde{\theta}^{(k)}, \mu^{(k)})_{k=1}^{N_{mc}}$ asymptotically distributed according to the **posterior** $p(\tilde{\theta}, \mu | \mathbf{y})$
- Approximation of the MMSE

$$\tilde{\theta}^{\text{MMSE}} \approx \frac{1}{N_{mc} - N_{bi}} \sum_{k=N_{bi}+1}^{N_{mc}} \tilde{\theta}^{(k)}$$

- Gibbs sampler

- iterative sampling according to conditional distributions

$$\tilde{\theta}_1 | \mathbf{y}, \mu, \tilde{\theta}_2 \sim \mathcal{IG}(N_Y, \mu^H \tilde{\mathbf{F}}_1^{-1} \mu)$$

$$\tilde{\theta}_2 | \mathbf{y}, \mu, \tilde{\theta}_1 \sim \mathcal{IG}(N_Y, (\mathbf{y} - \mu)^H \tilde{\mathbf{F}}_2^{-1} (\mathbf{y} - \mu))$$

$$\mu | \mathbf{y}, \tilde{\theta} \sim \mathcal{CN}\left((\tilde{\theta}_1 \tilde{\mathbf{F}}_1 \Gamma_{\tilde{\theta}}^{-1}) \mathbf{y}, ((\tilde{\theta}_1 \tilde{\mathbf{F}}_1)^{-1} + (\tilde{\theta}_2 \tilde{\mathbf{F}}_2)^{-1})^{-1}\right)$$

✓ *standard distributions → no Metropolis-Hasting (MH) moves*

Markov chain Monte Carlo algorithm

- Generation of a collection of samples $(\tilde{\boldsymbol{\theta}}^{(k)}, \boldsymbol{\mu}^{(k)})_{k=1}^{N_{mc}}$ asymptotically distributed according to the **posterior** $p(\tilde{\boldsymbol{\theta}}, \boldsymbol{\mu} | \mathbf{y})$
- Approximation of the MMSE

$$\tilde{\boldsymbol{\theta}}^{\text{MMSE}} \approx \frac{1}{N_{mc} - N_{bi}} \sum_{k=N_{bi}+1}^{N_{mc}} \tilde{\boldsymbol{\theta}}^{(k)}$$

- Gibbs sampler
 - iterative sampling according to conditional distributions

$$\tilde{\boldsymbol{\theta}}_1 | \mathbf{y}, \boldsymbol{\mu}, \tilde{\boldsymbol{\theta}}_2 \sim \mathcal{IG}(N_Y, \boldsymbol{\mu}^H \tilde{\mathbf{F}}_1^{-1} \boldsymbol{\mu})$$

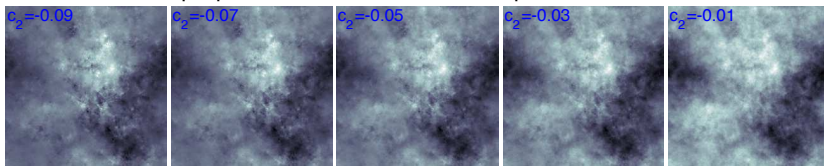
$$\tilde{\boldsymbol{\theta}}_2 | \mathbf{y}, \boldsymbol{\mu}, \tilde{\boldsymbol{\theta}}_1 \sim \mathcal{IG}(N_Y, (\mathbf{y} - \boldsymbol{\mu})^H \tilde{\mathbf{F}}_2^{-1} (\mathbf{y} - \boldsymbol{\mu}))$$

$$\boldsymbol{\mu} | \mathbf{y}, \tilde{\boldsymbol{\theta}} \sim \mathcal{CN}\left((\tilde{\boldsymbol{\theta}}_1 \tilde{\mathbf{F}}_1 \boldsymbol{\Gamma}_{\tilde{\boldsymbol{\theta}}}^{-1}) \mathbf{y}, ((\tilde{\boldsymbol{\theta}}_1 \tilde{\mathbf{F}}_1)^{-1} + (\tilde{\boldsymbol{\theta}}_2 \tilde{\mathbf{F}}_2)^{-1})^{-1}\right)$$

✓ *standard distributions → no Metropolis-Hasting (MH) moves*

Numerical simulations

- Synthetic multiplicative cascades: 2D Multifractal Random Walk
 - non-Gaussian process
 - multifractal properties \sim Mandelbrot's multiplicative cascades



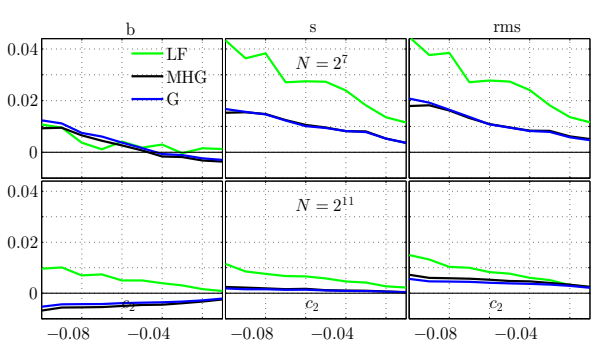
- Estimation setup
 - several image sizes $N \in \{2^7, 2^8, \dots, 2^{11}\}$
 - Daubechies' mother wavelet $j_1 \in \{1, 2\}, j_2 = \ln_2 N - 4$

- Performance assessment

$$b = \widehat{\mathbb{E}}[\hat{c}_2] - c_2, \quad s = \sqrt{\widehat{\text{Var}}[\hat{c}_2]}, \quad \text{rms} = \sqrt{b^2 + s^2}$$

→ computed over 100 independent realizations

Results: estimation performance



LF

linear regression

MHG

space-domain model
+ Whittle approximation
+ uniform prior
→ Gibbs/MH
[\[Combexelle15\]](#)

G

Fourier-domain model
+ data augmentation
+ conjugate prior
→ Gibbs

● MHG vs G

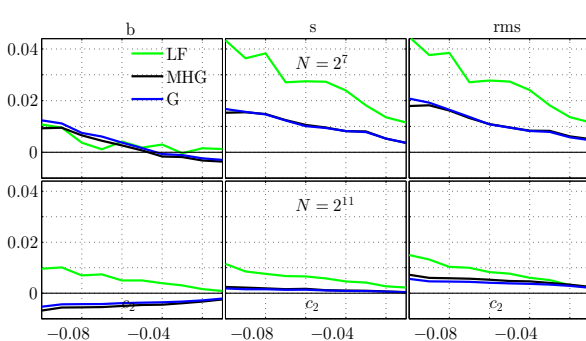
→ slight difference for the bias, vanishing for large sample sizes

● LF vs Bayesian (MHG/G)

→ significant reduction of the standard deviation

→ root mean square error divided by 4

Results: estimation performance



LF

linear regression

MHG

space-domain model
+ Whittle approximation
+ uniform prior
→ Gibbs/MH
[\[Combrexelle15\]](#)

G

Fourier-domain model
+ data augmentation
+ conjugate prior
→ Gibbs

● MHG vs G

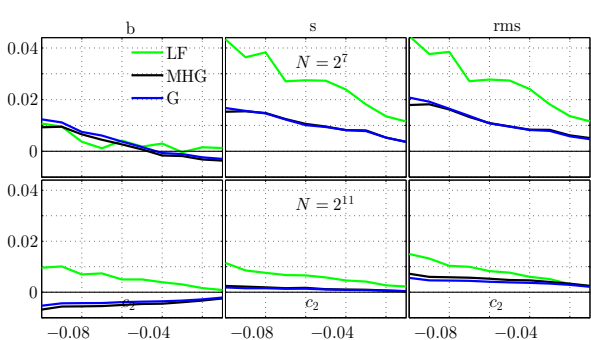
→ slight difference for the bias, vanishing for large sample sizes

● LF vs Bayesian (MHG/G)

→ significant reduction of the standard deviation

→ root mean square error divided by 4

Results: estimation performance



LF

linear regression

MHG

space-domain model
+ Whittle approximation
+ uniform prior
→ Gibbs/MH
[\[Combexelle15\]](#)

G

Fourier-domain model
+ data augmentation
+ conjugate prior
→ Gibbs

● MHG vs G

→ slight difference for the bias, vanishing for large sample sizes

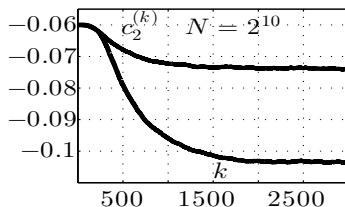
● LF vs Bayesian (MHG/G)

→ significant reduction of the standard deviation

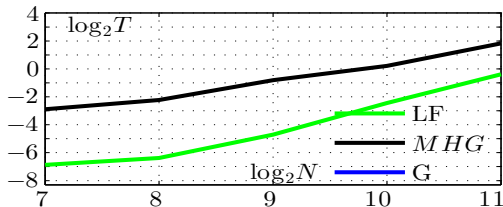
→ root mean square error divided by 4

Results: convergence and computational cost

Average Markov Chains



Computational time



● Convergence of Markov Chains

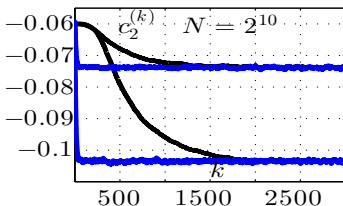
→ MHG long burn-in (tuning of the proposals) ~ 3000 iterations

● Computational time $T = \text{DWT} + \text{estimation algorithm}$

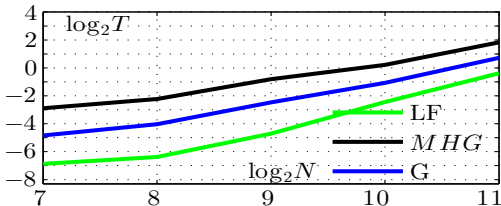
→ MHG 25 – 5 times slower than LF

Results: convergence and computational cost

Average Markov Chains



Computational time



● Convergence of Markov Chains

- MHG long burn-in (tuning of the proposals) ~ 3000 iterations
- G almost immediate convergence ~ 600 iterations

● Computational time $T = \text{DWT} + \text{estimation algorithm}$

- MHG 25 – 5 times slower than LF
- G 5 – 2 times slower than LF

Conclusion and future work

- Conclusions

- Bayesian estimation of c_2 for image texture
- novel statistical model
 - { generative model for Fourier coefficients (Whittle approximation)
 - { separable model (reparametrization + data augmentation)
- efficient inference via a Gibbs sampler
- excellent performance, competitive computational cost

- Work under investigation

- MFA of multivariate data via the design of multivariate priors

Thanks for your attention

References

- [\[Parisi85\]](#) U. Frisch, and G. Parisi, *On the singularity structure of fully developed turbulence; appendix to Fully developed turbulence and intermittency, by U. Frisch*, in Proc. Int. Summer School Phys. Enrico Fermi, North-Holland, 1985, pp. 84-88
- [\[Jaffard04\]](#) S. Jaffard, *Wavelet techniques in multifractal analysis*, in Fractal Geometry and Applications: A Jubilee of Benoît Mandelbrot, Proc. Symp. Pure Math., M. Lapidus and M. van Frankenhuysen, Eds. 2004, vol. 72(2), pp. 91-152, AMS
- [\[Castaing93\]](#) B. Castaing, Y. Gagne, and M. Marchand, *Log-similarity for turbulent flows?*, Physica D, vol. 68, no. 34, pp. 387-400, 1993
- [\[Combexelle15\]](#) S. Combexelle, H. Wendt, N. Dobigeon, J.-Y. Tourneret, S. McLaughlin, and P. Abry, *Bayesian Estimation of the Multifractality Parameter for Image Texture Using a Whittle Approximation*, IEEE T. Image Proces., vol. 24, no. 8, pp. 2540-2551, Aug. 2015
- [\[Combexelle15\]](#) S. Combexelle et al, *Bayesian Estimation of the Multifractality Parameter for Images Via a Closed-Form Whittle Likelihood*, Proc. 23rd European Signal Process. Conf. (EUSIPCO), Nice, France, 2015.