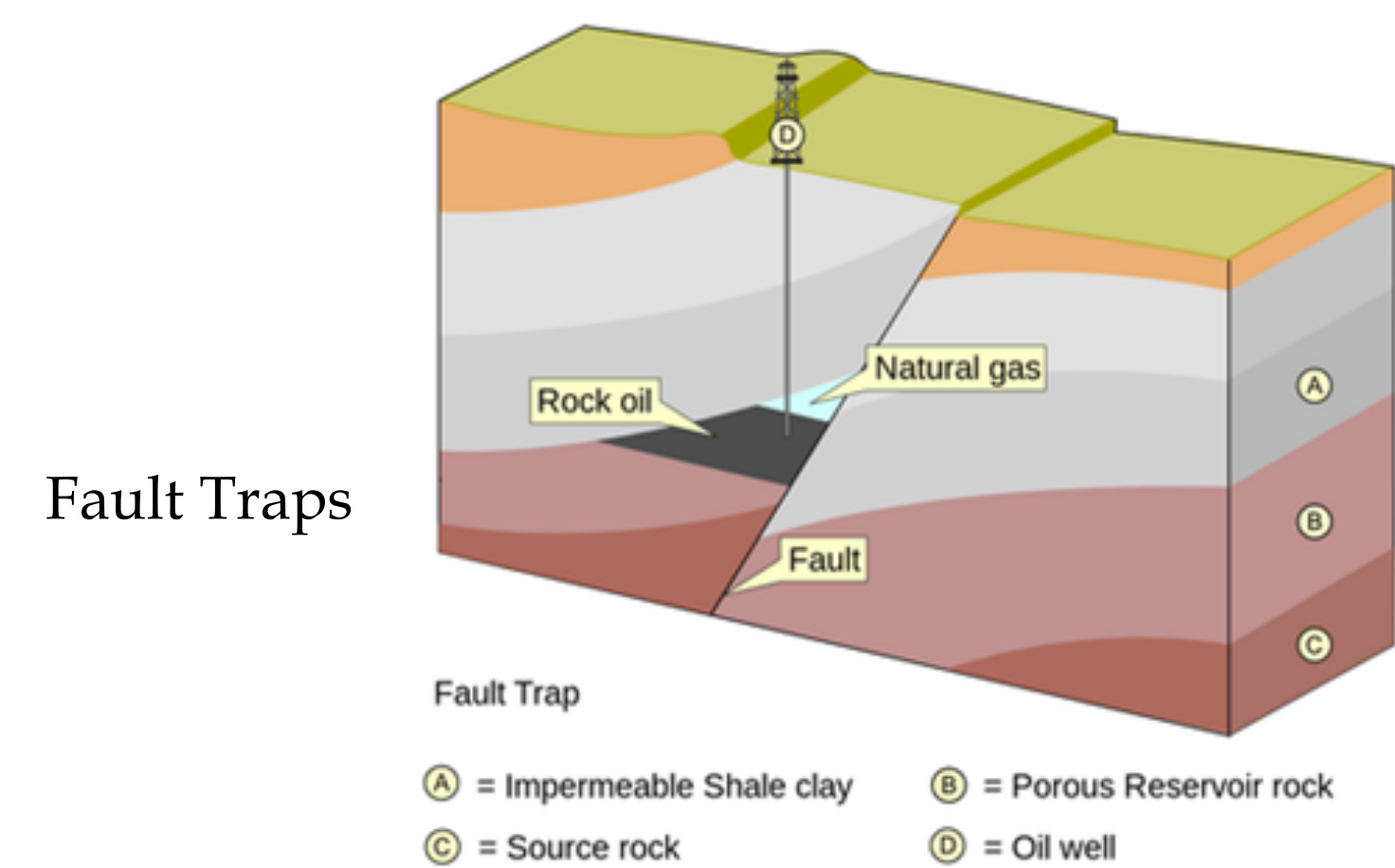
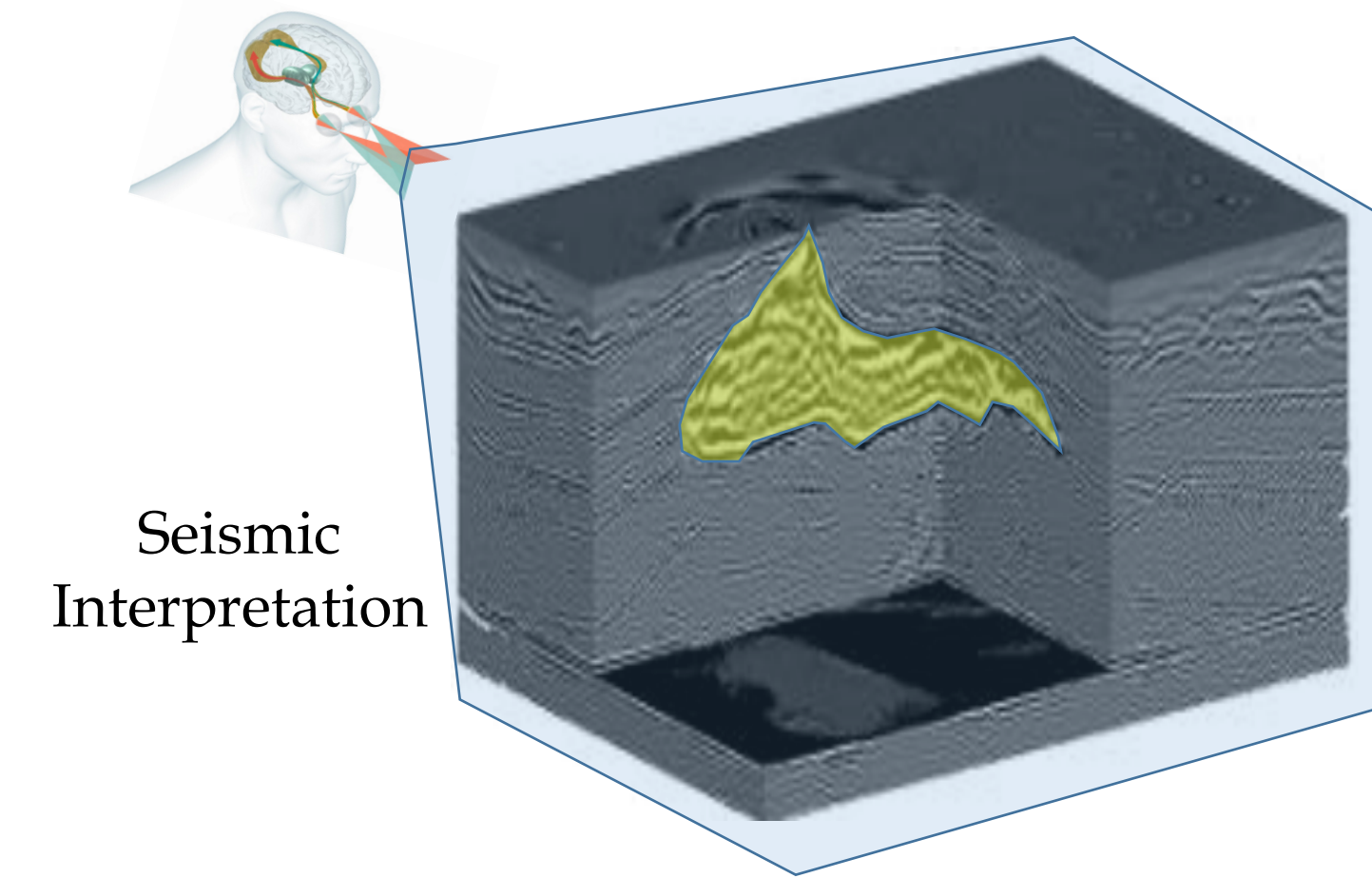
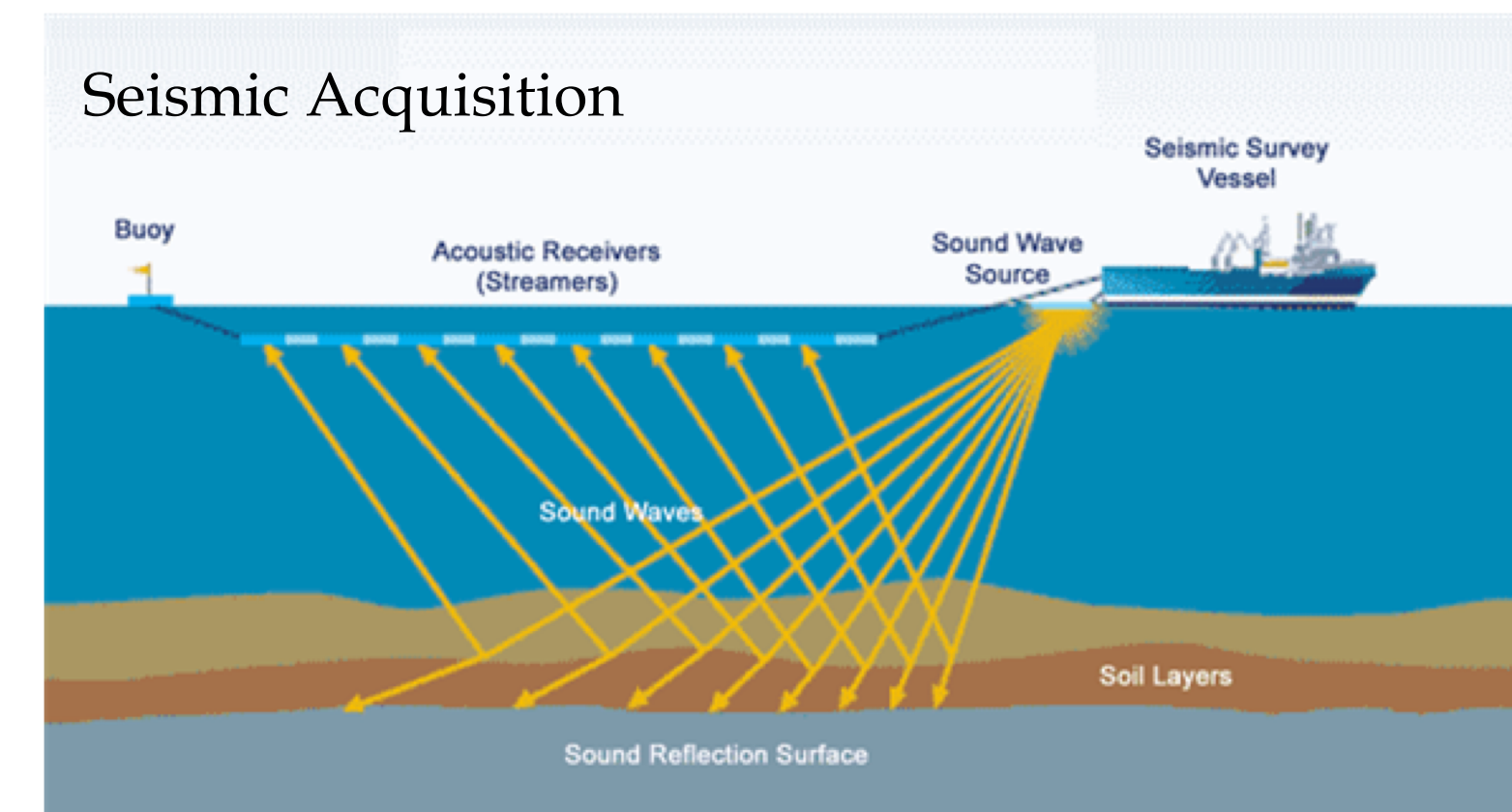
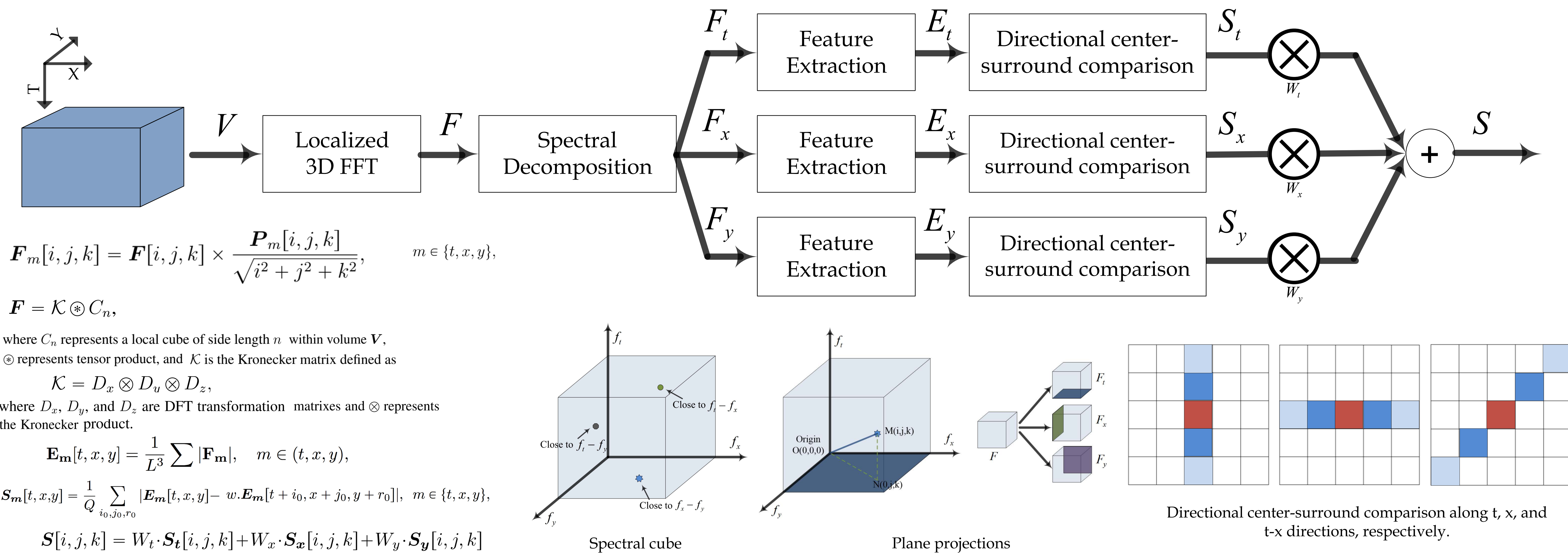


## Motivation

Large geological structures such as salt domes, faults, and anticlines form structural traps for oil and gas as a result of structural deformation (a bend or dip) of rocks, which takes place over elongated periods of time. Therefore, accurate localization and delineation of such structures is one of the important steps in seismic data interpretation.



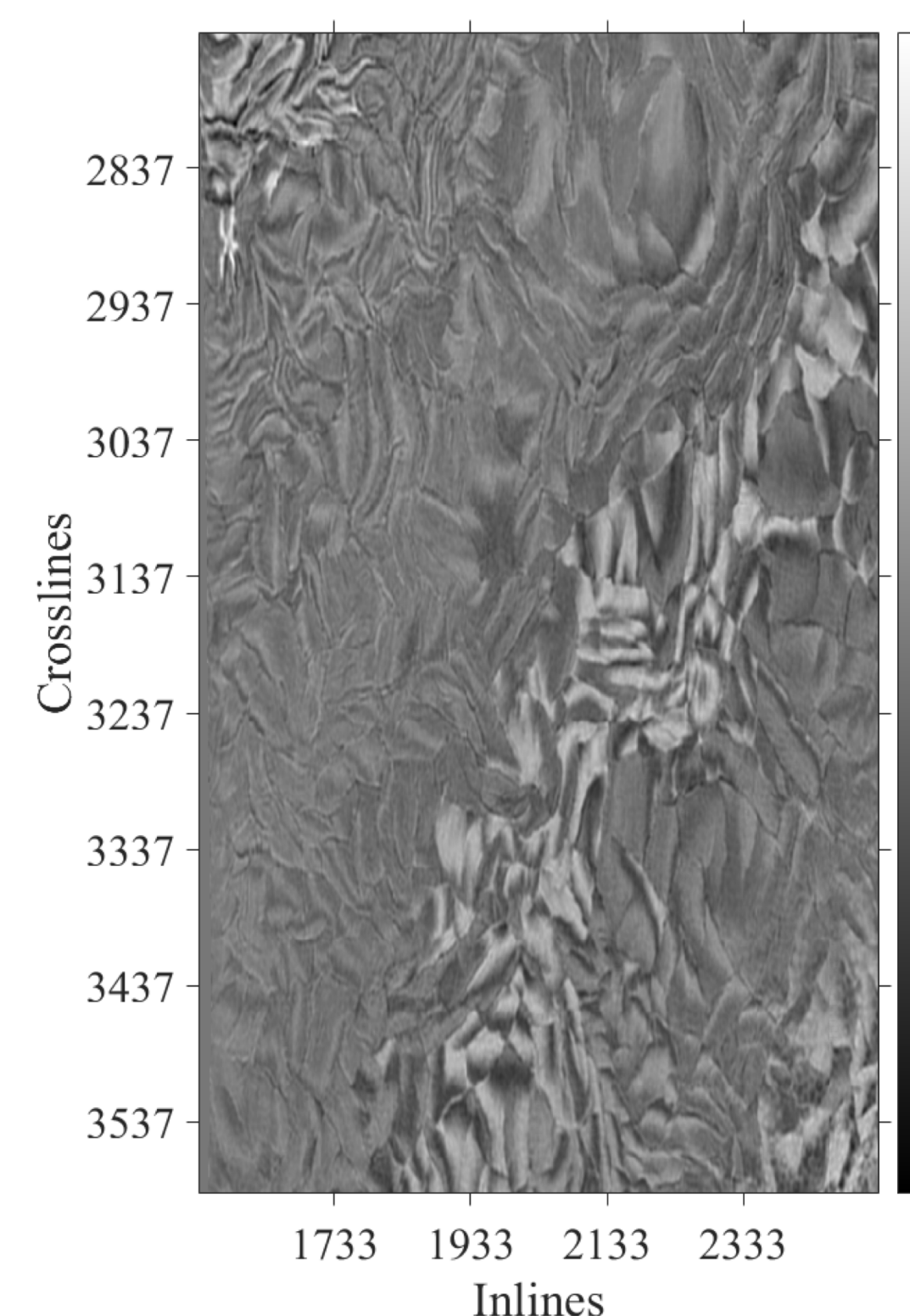
## Proposed Method



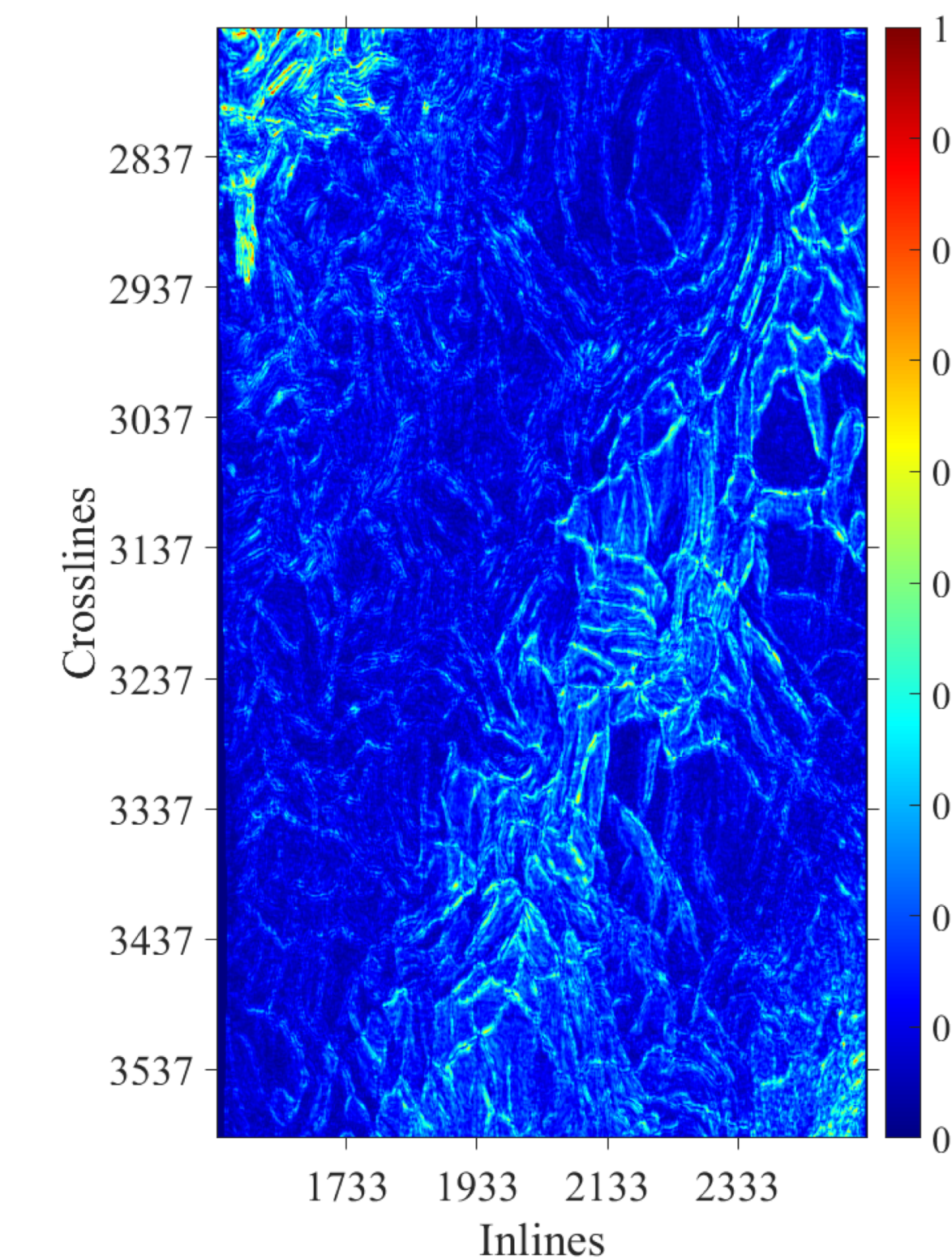
## Intermediate Results



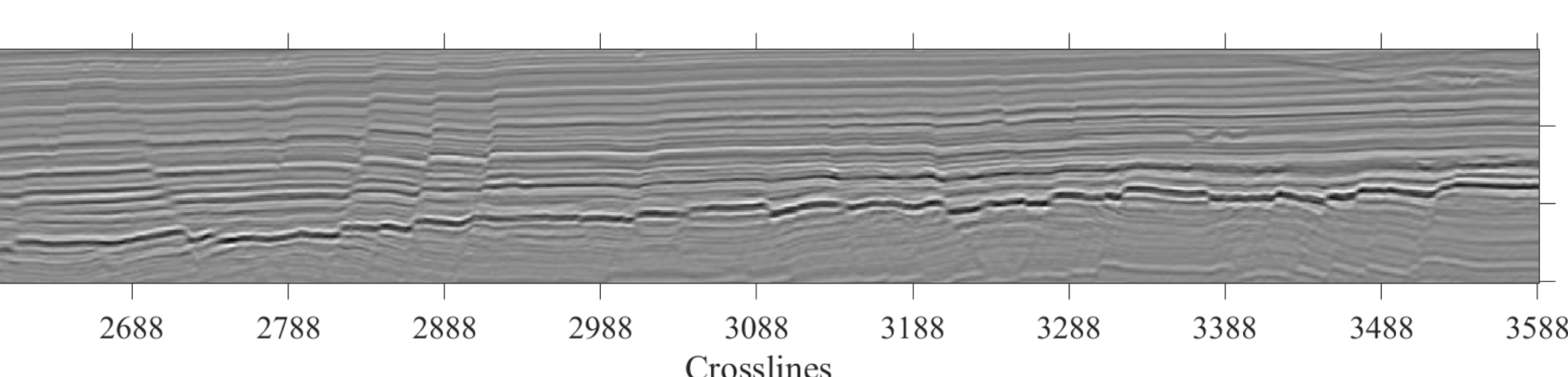
The Great South Basin, New Zealand



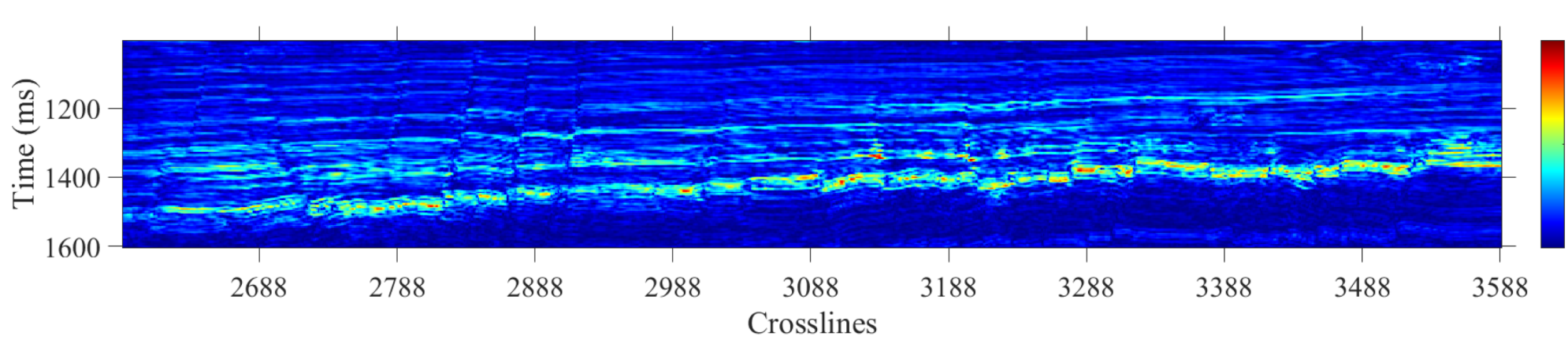
Time Section



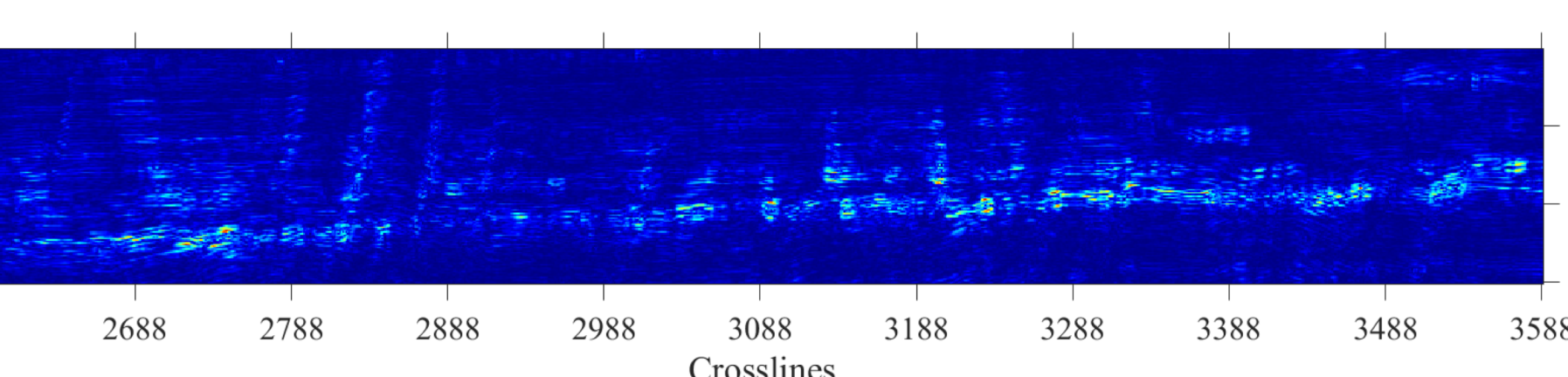
Saliency Map - Faults Network



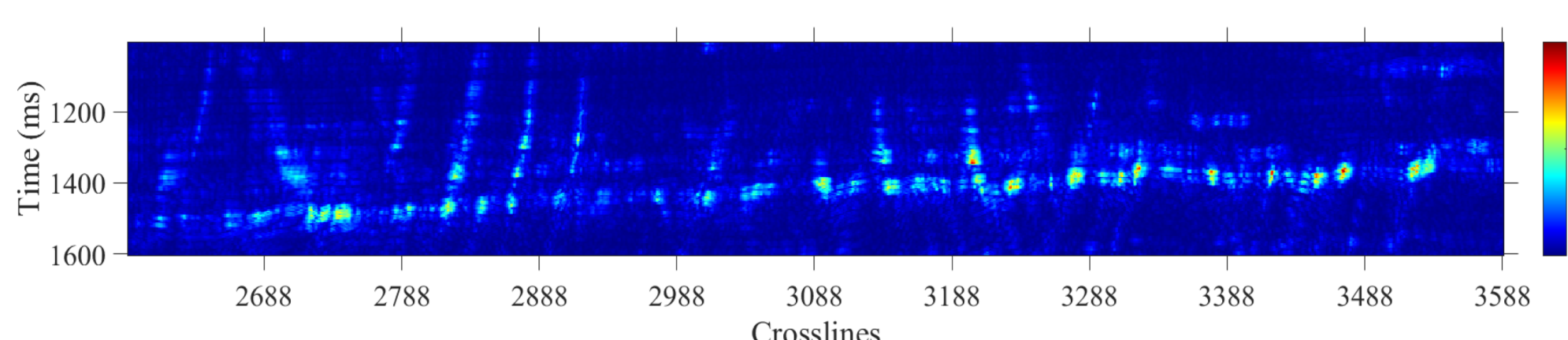
A Typical Seismic Inline Section



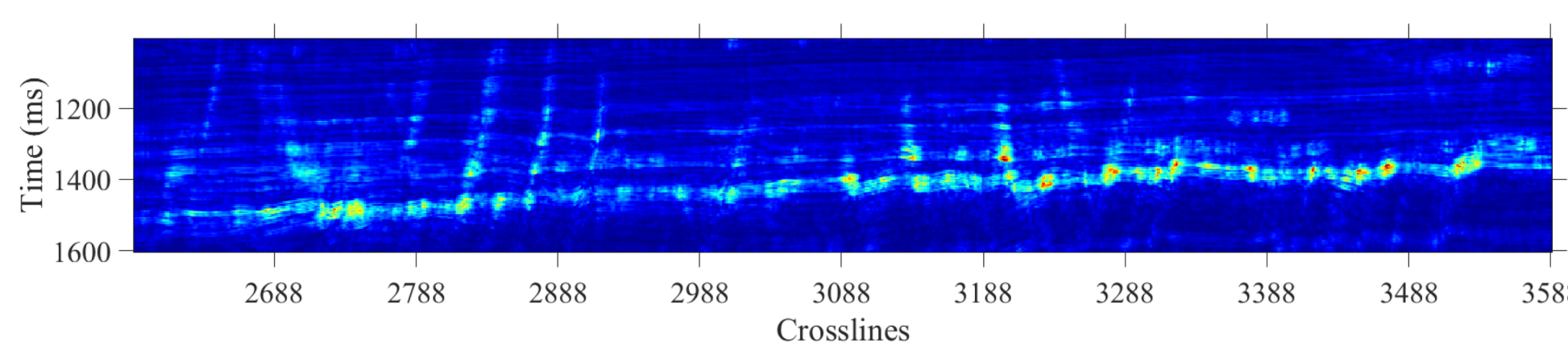
Saliency - Sx



Saliency - Sy



Saliency - St



Combined Saliency - S

## Experimental Results and Comparison with State-of-the-art Algorithms

